

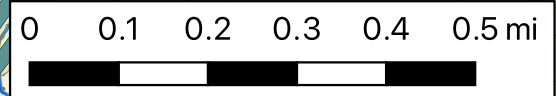
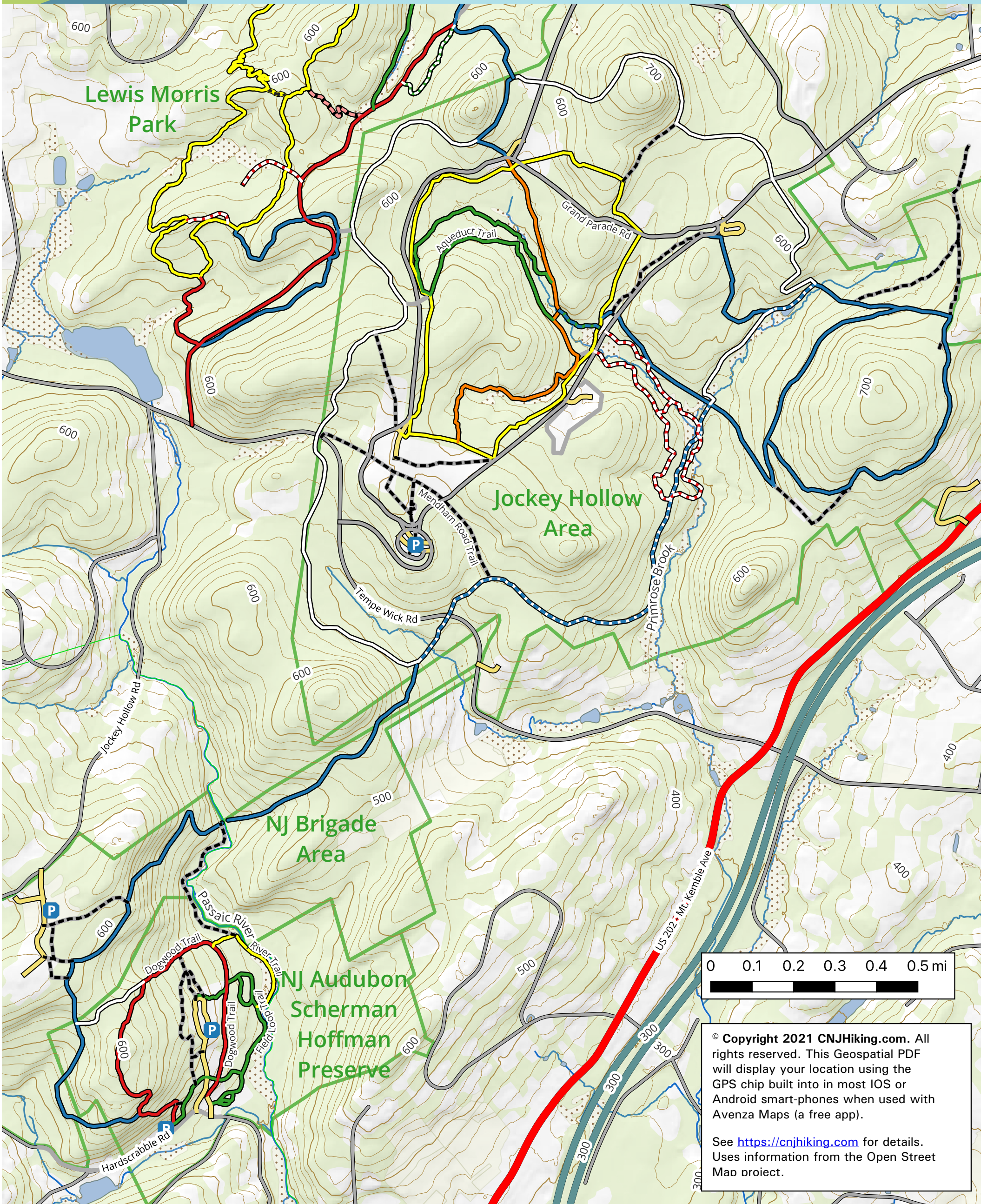
Morristown National Historical Park

Includes NJ Audubon's Scherman Hoffman Wildlife Sanctuary and part of Lewis Morris Park

Patriot's Path is administered by the Morris County Park System

Telephone: (973) 326-7600 Email: info@morrisparks.net

Website: Morris County Parks Commission Website



© Copyright 2021 CNJHiking.com. All rights reserved. This Geospatial PDF will display your location using the GPS chip built into in most IOS or Android smart-phones when used with Avenza Maps (a free app).
See <https://cnjhiking.com> for details. Uses information from the Open Street Map project.

20 foot contour intervals - Trail colors on map indicate blaze colors when known.